



MAKIYA

5 MEGAPIXEL SIDE-MOUNT CAMERA

Quality and Efficiency



5 MEGAPIXEL
45 FPS IN FULL RESOLUTION
LENS OPTICS
CMOS

MAKIYA

5 MEGAPIXEL SIDE-MOUNT TEM CAMERA

With its 5 megapixel CMOS image sensor it gives you all flexibility in speed and price performance ratio.

The latest camera in our long history of renowned side-entry cameras is the 5 megapixels TEM camera MAKIYA. It is designed for the side-entry ("35mm") of most nowadays TEMs and fills the gap between the MegaView G3 and the Phurona.

The MAKIYA comes with a modern CMOS sensor, providing 2,464 x 2,056 square pixels, sufficient resolution for a lot of standard imaging task, either standalone or as a perfect large-field-of-view supplement to a high-end bottom mount camera, like the XAROSA.

The MAKIYA camera provides a convenient speed of 45 frames per second at its full 5 megapixels resolution, which makes the use of binning for speed enhancement superfluous. A 2x binning with typical 90 fps is available for applications like diffraction, of which the MAKIYA is fully capable of – even without a beam stop.

The customized lens optics, based on

our long experience, ensures high light transmission efficiency, low to no distortion, no reflections, no chromatic aberration, and lowest vignetting.

Its overall specifications make no compromises. Its price performance ratio and versatility make it a best fit for standard Life and Materials Sciences applications which are in need of a large field of view, relatively high resolution and speed for an affordable price. The MAKIYA is a perfect match for any standard TEM but also for retrofitting legacy TEMs or TEMs yet without any decent camera (check with EMSIS for compatibility).

It goes without saying that all the sophisticated features of the current RADIUS version are also available with the MAKIYA: smart averaging, live measurements, HDR-Imaging, movie recording, drift correction, "click-to-center", etc. – you may use them all with all EMSIS cameras, including our new MAKIYA camera.

APPLICATIONS

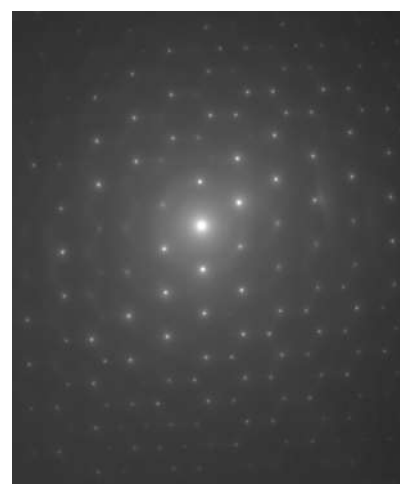
LIFE & MATERIALS
SCIENCES

BIO-IMAGING

ARCHIVING

DIGITAL
DOCUMENTATION

DIFFRACTION



Si 111, camera length 770mm.

SPECIFICATIONS

Camera	MAKIYA
Model	S05U
Sensor	CMOS
Image size (max.)	2,464 x 2,056 pixels
Effective pixel size	10.0 x 10.0 μm^2
Cooling	Passive air cooled
Frame rate	45 fps at full resolution
Camera coupling	Lens optics
Data interface	USB 3.0
Operating system	Windows 11 (64bit)
Imaging software	RADIUS 2.3
Mounting position	Side mount, on axis

(Specifications are subject to change without prior notice by the manufacturer.)



EMSIS GmbH

Mendelstraße 17
48149 Münster, Germany
Phone: +49 (0)251 297962-0
Fax: +49 (0)251 297962-90
E-mail: info@emsis.eu

www.emsis.eu